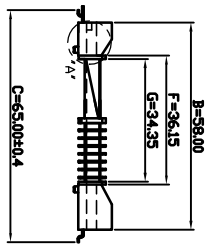


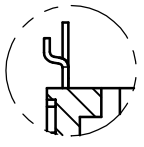
SECTION B-B ① SECTION C-C ② SECTION D-D ③ ⑤ ⑦ SECTION E-E ④ ⑥ ⑧ SECTION F-F ⑨



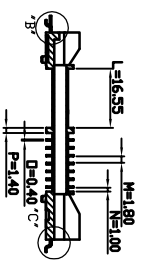
DETAIL A SCALE 2:1



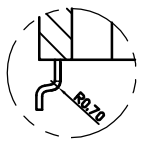
DETAIL B SCALE 2:1



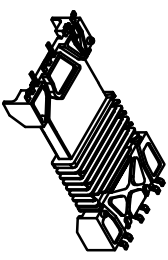
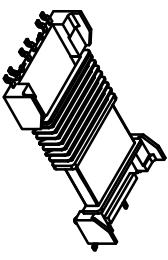
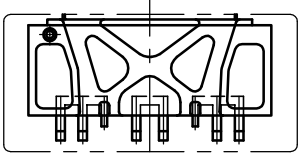
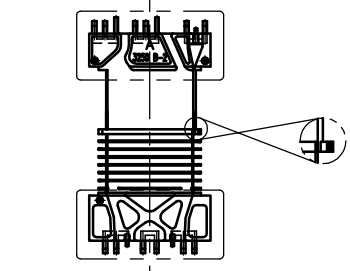
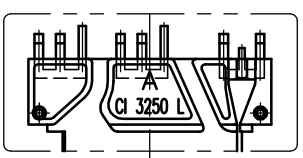
DETAIL C SCALE 4:1



SECTION A-A



DETAIL D SCALE 4:1



NOTE

1. 리드 프레임 도금시양은 하지 NI 1~2 μ m, SN도금 4 μ m 이상으로 한다.
2. 지정외 공차는 공차표에 준한다.
3. CAVITY NO는 양각이며, 높이는 0.05~0.07이내이고 위치는 제품설계자와 협의할 것.
4. GATE 위치와 사양은 제품설계자와 협의할 것.
5. FLASH, WELD, SINK MARK, ZETTING등이 없을 것.

△									
△									
△									
△									
MARK									
DRAWN	CHECKED	APPROVED	REVISION NOTE		DATE	DRAWN	CHECKED	APPROVED	
Material	Checked	Approved	MATERIAL : LCP	UL REC. : US94V-0	DATE : 2010.02.09		THIRD ANGLE PROJ.	SCALE : 1/1	
DATE : 2010.02.09							TOLERANCE : ±0.2 (unless otherwise specified)	UNIT : mm	
주석회사 대흥보빈 DAE HEUNG BOBBIN CO., LTD.			TITLE	CI 32*50 L	DWG NO	DH-100209-7038-08			